

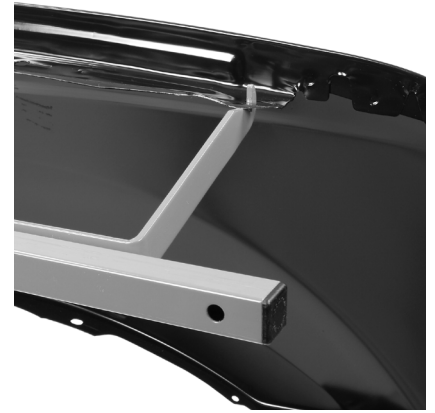
Innovative Door-Fender Stand™ Usage Instructions

P/N: I-DF

Shows Drop Arm positioned toward the end of Upright Support when mounting a fender.



Shows Support Arm hooked through bolt hole in fender.



Shows Drop Arm positioned toward the center of Upright Support when mounting a door.



Shows Clamp Arm clamping the fender.

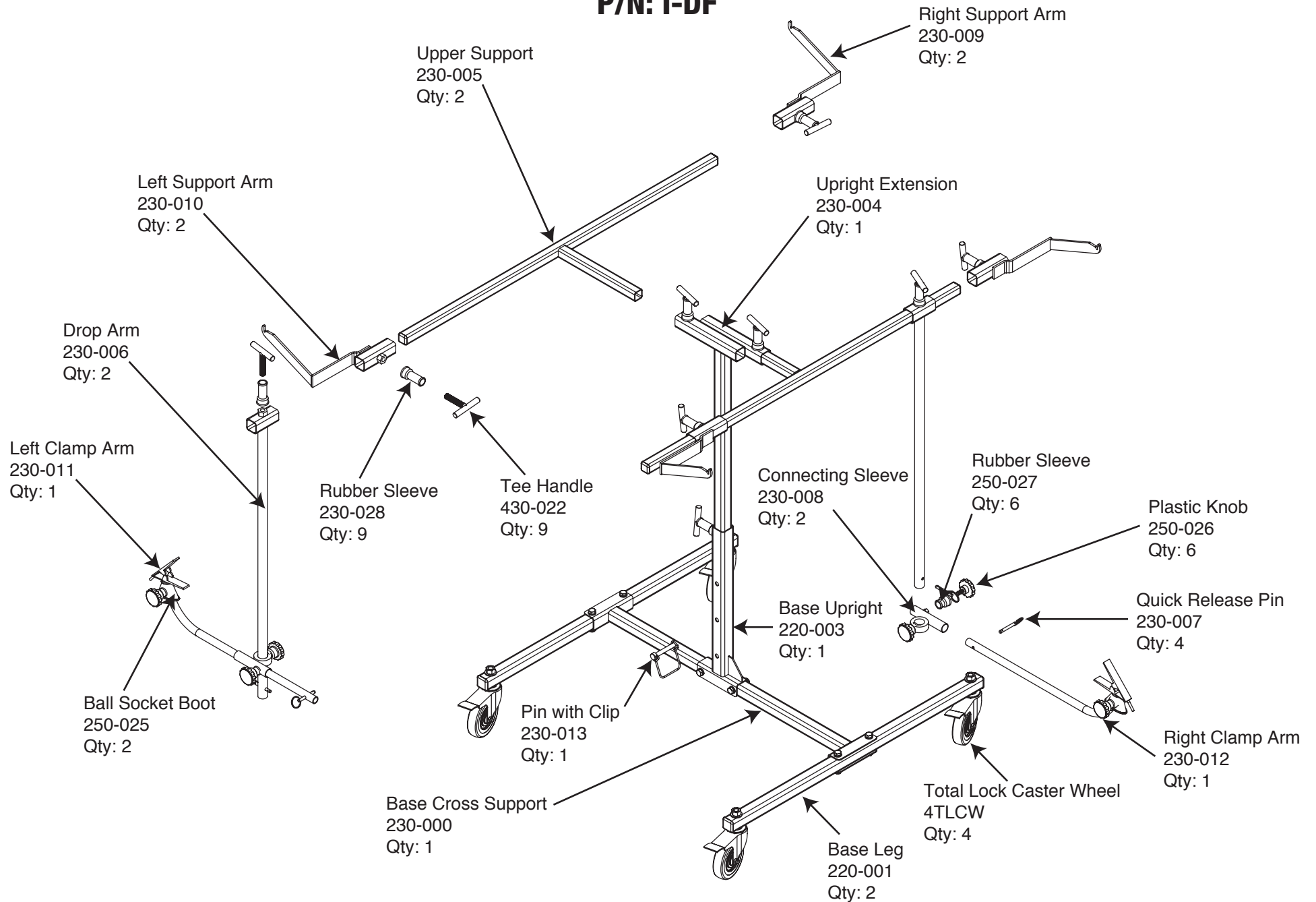


Shows Clamp Arm using pin through bolt hole.



Innovative Door-Fender Stand™

P/N: I-DF



If you have any comments, questions or concerns about our products or are missing a part, please contact us toll-free at 1-866-438-4884 or 651-415-0733 or visit www.innovativetools.com/contacts