

# CAM

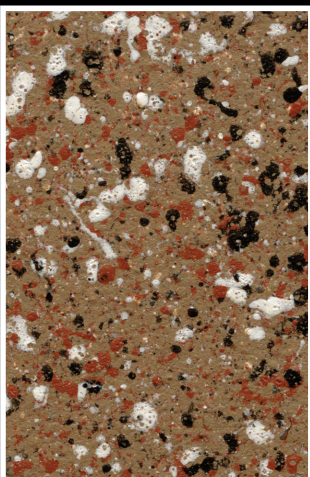
# CAMFLECK

## DECORATIVE FLECK FINISH

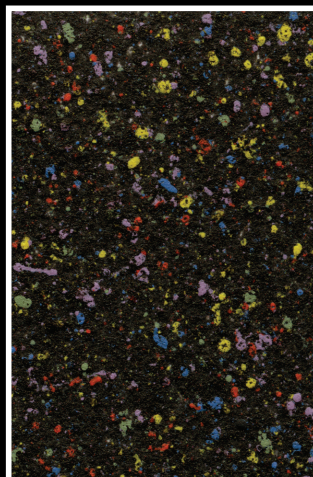
- CAMFLECK is the original water-based fleck coating
- CAMFLECK is an ideal protective and decorative finish for cargo areas of utility vehicles, vans, trailers, CV's and horse floats, as well as boat interiors and for architectural applications
- Apply by a spray gun - see label for full technical details
- Available in Black, Beige, Grey and White
- Appropriate coverage 3 square metres per litre. Available in 1 Litre and 4 Litre sizes.



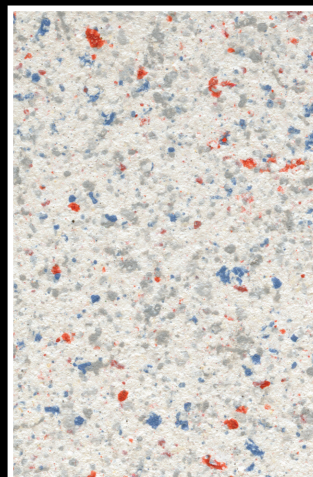
Beige



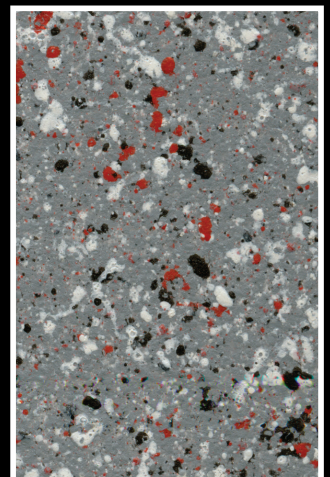
Black



White



Grey





WATER BASED



AUTOMOTIVE



MARINE



TOUCH DRY  
2-4 HOURS



2.5mm (min)  
1-2 BAR (16-32 PSI)



2.4mm (min)  
1-2 BAR (16-32 PSI)

**CAMFLECK** is a durable, water based, multi-coloured decorative coating that has been specially designed to protect cargo areas of vans, utilities and other commercial vehicles. Also suitable for marine applications.

**Directions For Use:**

Surface to be painted should be sound, suitably cleaned and degreased. Remove all loose and flaking paint. All surfaces should be undercoated with suitable primer surfacer. It is essential that **CAMFLECK** is hand stirred or "boxed", i.e. poured from one can to another and back again. Machine mixing will break up the coloured flecks. **CAMFLECK** should only be applied when ambient temperature is above 10°C. **CAMFLECK** is supplied "Ready For Use".

**Application:**

Equipment should be flushed with water before using CAMFLECK. For best results apply CAMFLECK with a suction feed gun 2.5mm (minimum) or a gravity feed spray gun 2.4mm (minimum) at 1-2 bar ( 16-32 PSI). Apply one medium coat and allow to flash for a minimum of 30 minutes, before applying two wet coats with 25-30 minutes flash off between coats. Do not attempt to obtain maximum build and coverage in a single heavy coat or reduce flash off times as this will destroy both the appearance and film build properties of the fleck finish. Caution should be used in application as speed of gun and pressure used can change the effect of the fleck pattern. Air circulation over the painted surface will assist in flash off and drying of the product. Keep container sealed during use. Thinning: Maximum 10% with clean water

**Drying Times:**

Tack free - 1 hour

Dry to handle - 2-4 hours

Maximum hardness in - 7 days at 25°C

Full chemical resistance - once fully cured CAMFLECK may be overcoated with a suitable 2 pack clear or 2 pack sealer.

Dry times shown are dependant on ambient weather conditions, film build and flash off time of a minimum of 30 minutes.

**Clean Up:**

Equipment should be cleaned with water followed by Mineral Turpentine or Thinners if required.

**Safety Directions:**

Avoid contact with the skin and eyes. Wear overalls, impervious gloves and safety glasses. Use with adequate ventilation. If inhalation risk exists wear an organic vapour/particulate respirator. When handling, do not eat, drink or smoke.

**Storage:**

Store in original containers. Store well sealed containers in a cool dry place. Do NOT allow to freeze.

**For Fire:**

Use foam, dry agent, CO2. Avoid breathing products of combustion.

**For Spills:**

Wear protective equipment. Absorb with sand or earth. Collect and seal in properly labelled drums. Suitable for incineration by an approved agent.

**First Aid:**

If poisoning occurs, contact a doctor or Poisons Information Centre.

**Skin:**

If skin contact occurs, remove contaminated clothing and wash skin thoroughly.

**Eyes:**

If in eyes, hold eyes open, flood with water for at least 15 minutes and see a doctor.

**Inhalation:**

Remove to fresh air.

**Ingestion:**

If swallowed, do NOT induce vomiting, give a glass of water and seek medical advice.

**Disclaimer:**

These guidelines are based on our experience in the industry, however, no guarantee is given or implied. Varying substrate conditions, environmental influences such as temperature and humidity, as well as different application methods and preferences could result in unsatisfactory results. When in doubt, conduct a small trial application on the applicable substrate and other surface finishes and coatings, in order to be assured that the results will be satisfactory.

**For further information, refer to Material Safety Data Sheet.**

**Distributed by:**